

What sets ITLS apart?

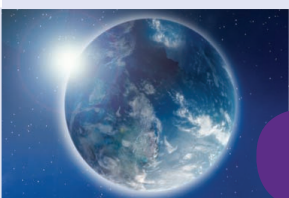
Updated for publication of the 8th edition textbook!

Course Foundation

- Patient assessment algorithm used as the foundational methodology for the U.S. Department of Transportation's National Standard Curriculum, taught in paramedic, AEMT, EMT and first responder programs
- Endorsed by the American College of Emergency Physicians
- Primary Survey utilizes the CABG approach (Control life-threatening bleeding, Airway, Breathing, Circulation) to emphasize immediate bleeding control if present
- Core and supplemental content that allows for customization to address regional and educational needs
- Dedicated Pediatric, Military and Access (vehicle extrication) certification courses
- Online solution for didactic portion of the Provider course for flexibility and accessibility
- Professional development modules for Instructors to enhance their teaching and evaluation skills to ensure objective and consistent evaluations
- Continually updated "Current Thinking" section of ITRAUMA.org to reflect recent trauma topics and recommendations as reviewed and evaluated by the Editorial Board
- Expanded online resources offered by Pearson Education

8th Edition Textbook

- Critical evidence-based, focused text that emphasizes the critical aspects of trauma care and minimizes the "nice-to-know" information
- Each core chapter followed with a patient management skills chapter to reinforce critical skills and appeal to different learning styles
- Capnography stressed as the standard for confirming and monitoring position of the endotracheal tube, supraglottic airways, and continuous assessment of ventilatory and shock status
- Distinguishes between Rapid Extrication and Emergency Rescue
- References the Hartford Consensus II document that indicates EMS should enter the scene of a suspected mass shooting with law enforcement protection
- Discusses on evaluation of lactate levels in shock
- Encourages Focused Assessment with Sonography for Trauma (FAST) exams in the pre-hospital setting, when available
- Pelvic binders indicated for pre-hospital treatment of an unstable pelvis
- Dedicated chapter on substance abuse and treatment of the impaired patient
- "What's New" section outlining updates and additions to the previous edition



Contact ITLS:

ITRAUMA.org | 888.495.4857 | 630.495.6442

